

Key Features

- Heavy duty extruded aluminium design with four entry plugs
- Class I, Div 1 & 2, Groups A, B, C, D
- Class II, Div 1 & 2, Groups E, F, G
- Class III
- CSA – NRTL Approved to OSHA standards
- MFP Technology (Mechanical Filter with Photocell) CCD models for outstanding color and IR sensitivity
- LXR CCD models for excellent IR sensitivity, low smear, low streak and excellent anti-blooming characteristics
- Easy access slide tray allows for fast installation and easy camera adjustments
- 3/8" chemical resistant window
- Optional Lexan ballistic window
- Optional heater / blower
- Various compatible mounting hardware
- Fixed or varifocal auto-iris lenses
- May be combined with Extreme's Explosion Protected Infrared Illumination for 24/7 day and night effectiveness

Product Description

The EX52 is a 12" explosion protected camera for effective surveillance at high risk environments. Designed for hazardous industrial locations including the entire range of OSHA (UL) designations for explosive locations. Its stringent Class I, Division I certifications allow safe functioning at locations where ignitable concentrations of flammable gases or liquid vapors are present during normal operation. Groups covered include acetylene, hydrogen, ethylene and methane, all highly explosive gases. The EX52 is also certified for operation in areas where ignitable concentrations of combustible dusts (such as carbon-based or agricultural dusts) are present during normal operation

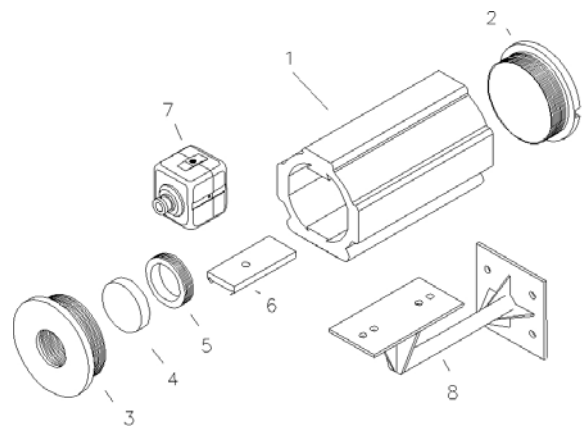
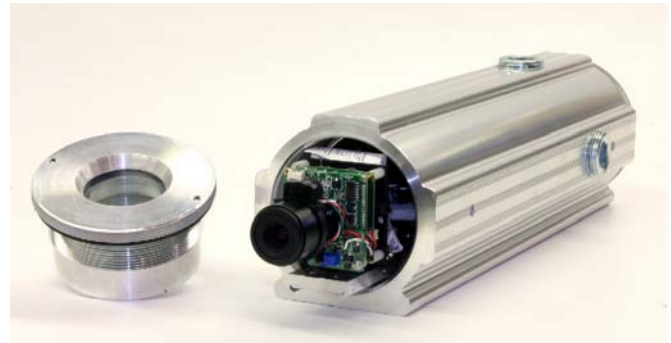
The EX52 is also designed to CCTV industry standards for mounting hardware and motorized pan/tilt devices.

Applications

- Chemical factories
- Petroleum refineries, oil and gas processing
- Utility gas plants
- Grain elevators, flour mills
- Dry cleaning plants
- Pharmaceutical plants
- Coal and carbon processing
- Aircraft hangars
- Spray finishing areas
- Munitions and fuel storage facilities

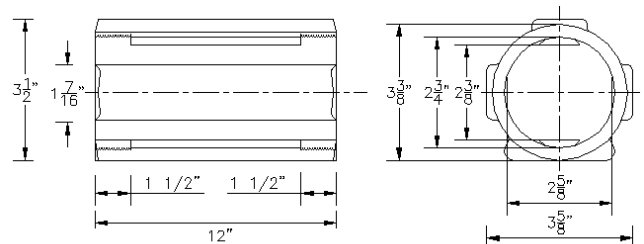
Note: The use of explosion protected housings may be subject to local or regional regulatory approval. The authorities having jurisdiction for each installation and application may vary and their respective requirements may differ. The integration of your equipment with the EX52 may also be subject to local authority approval.

Product Images



Legend:

1. EX52 housing copper-free aluminum.
2. End cover with locking pin.
3. View cover with locking pin.
4. 3/8" view window (3/4" ballistic Lexan insert optional)
5. Retaining ring
6. Camera guide tray with locking pin.
7. Standard CCD camera. (optional)
8. Standard mounting hardware (optional)

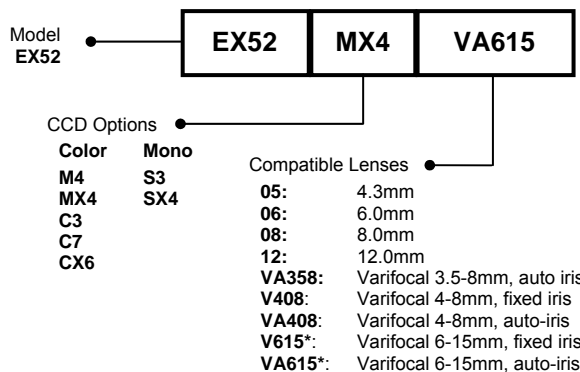


Certifications / Compliance

	EX52 Explosion Protected Surveillance Enclosure
CSA-NRTL	LR 113310
Class	9098 01 / 81 - Miscellaneous - for Hazardous Locations
Safety	OSHA / ANSI / UL / CSA
	UL 508, Sixteenth Edition - Industrial Control Equipment
	UL 698, Eleventh Edition - Industrial Control Equipment for Use in Hazardous (Classified) Locations
	UL 1203 Explosion-Proof and Dust-Ignition-Proof Electrical Equipment for Use in Hazardous (Classified) Locations
	CSA C22.2 No.0-M1991 General Electrical Requirements
	CSA C22.2 No.0.4-M1982 Bonding and Grounding of Electrical Equipment (Protective Grounding)
	CSA C22.2 No.25-M1966 Enclosures for Use in Class II Groups E, F, and G Hazardous Locations
	CSA C22.2 No.30-M1986 Explosion-proof Enclosures for Use in Class I Hazardous Locations
	CSA C22.2 No.94-M1991 Special Purpose Enclosures
	CSA C22.2 No.142-M1987 Process Control Equipment
	Class I, Div 1, 2, Groups A, B, C, D
Class II, Div 1, 2, Groups E, F, G	
Class III	
Operational	Temperature Code T6 at maximum ambient temperature 55°C (131°F)
Environmental	CSA / NEMA TYPE 4

General CCD Specification (See specification tables for detailed camera specifications)

CCD	Description
MX4	Mechanical filter, photocell, enhanced infrared sensitivity, 1/3" LXR sensor, 550 TVL color, 570 TVL monochrome
M4	Mechanical filter, photocell, 1/3" SuperHAD sensor, 550 TVL color, 570 TVL monochrome
CX6	Enhanced infrared sensitivity, 1/3" LXR sensor, 480 TVL color
C7	1/3" SuperHAD sensor, 480 TVL color
C3	1/3" SuperHAD sensor, 380 TVL color
S3	1/3" SuperHAD sensor, 600 TVL monochrome
SX4	High performance infrared, 1/3" LXR sensor, 420 TVL monochrome

Part Numbers (Special Order Models available on request)


*Use only with C3, C7 and CX6 CCDs.

Note: For M4 and MX4 CCDs, use either the V408 or the VA408.

Optional Accessories

EXPS.001	Power supply, 110 AC input to 12 VDC
EXMB.003	Heavy duty wall bracket, Pan-Tilt adjustable
EXMB.004	Heavy duty ceiling bracket, Pan-Tilt adjustable
HSG50WIN-B	Lexan ballistic insert 0.75" (not available with varifocal lenses)

Specifications: Photocell-Controlled Mechanical Filter Cameras, Day / Night Switching

	Day-Night Switching, Color / Monochrome	Day/Night, Color/Mono w/ Enhanced IR Performance
CCD	M4 with MFP Technology	MX4 with MFP Technology
Image Sensor	1/3" Interline SuperHAD CCD	1/3" LXR CCD
Resolution	550 TVL color / 570 TVL monochrome	550 TVL color / 570 TVL monochrome
Effective Pixels NTSC	NTSC: 768 (H) x 494 (V)	NTSC: 768 (H) x 494 (V)
Effective Pixels PAL	PAL: 752 (H) x 582 (V)	PAL: 752 (H) x 582 (V)
Sensitivity	0.06 Lux with F1.4 lens 0 lux with infrared (B/W)	0.02 Lux with F1.4 lens 0 lux with infrared (B/W)
S/N Ratio	Greater than 48dB (AGC off)	Greater than 48dB (AGC off)
Output Signal	1Vp-p, 75Ω	
Gamma	0.45	
Gain Control	AGC	
Electronics Iris	1/60 ~ 1/100,000 (NTSC) • 1/50 ~ 1/100,000 (PAL)	
Filter	Dual-window mechanical type	
Consumption	5 W maximum	
Voltage	12 to 24 AC/DC	
Construction	Robust aluminum extrusion with four entry plugs	
Bracketry	U-Bracket with stainless steel straps included	
View Window	Copper-free tempered view window	
Weight	10 lbs (4.5kgs) without camera	
Operational Range	-50°C to +50°C -58°F to +122°F	
Overall Dimension	Approximately 3 3/8" (86mm) diameter x 12" (305mm) length	

Specifications: Color Cameras

CCD	C3 Standard	C7 High Resolution Color	CX6 LXR High Resolution Color
Image Sensor	1/3" Interline SuperHAD	1/3" Interline SuperHAD	1/3" LXR CCD
Resolution	380 TVL	480 TVL	480 TVL
Effective Pixels NTSC	NTSC: 510 (H) x 492 (V)	NTSC: 768 (H) x 494 (V)	NTSC: 811 (H) x 508 (V)
Effective Pixels PAL	PAL: 500 (H) x 582 (V)	PAL: 752 (H) x 582 (V)	PAL: 795 (H) x 586 (V)
Sensitivity	0.5 Lux @ F1.4	2.7 Lux @ F1.4	0.14 Lux @ F1.4
S/N Ratio	Greater than 48dB	Greater than 48dB	Greater than 48dB
Output Signal	1Vp-p, 75Ω		
Gamma	0.45		
Gain Control	AGC		
Electronics Iris	1/60 ~ 1/100,000 (NTSC) • 1/50 ~ 1/100,000 (PAL)		
Consumption	5 W maximum		
Voltage	12 to 24 AC/DC		
Construction	Robust aluminum extrusion with four entry plugs		
Bracketry	U-Bracket with stainless steel straps included		
View Window	Copper-free tempered view window		
Weight	10 lbs (4.5kgs) without camera		
Operational Range	-50°C to +50°C -58°F to +122°F		
Overall Dimension	Approximately 3 3/8" (86mm) diameter x 12" (305mm) length		

Patent Pending. Specifications are subject to change without notice. © Extreme CCTV Inc 2008.

EX52_TS_080620.doc


CORPORATE HEADQUARTERS
EXTREME CCTV INC.
 Toll Free: 1 888 409 2288
 Tel: +1 604 420 7711
 Fax: +1 604 420 3300
 Email: Sales@ExtremeCCTV.com
 Web: www.ExtremeCCTV.com

EUROPEAN OPERATIONS
DERWENT SYSTEMS LTD.
 Tel: +44 (0) 1670 730 187
 Fax: +44 (0) 1670 730 188
 Email: Sales@DerwentCCTV.com
 Web: www.DerwentCCTV.com

EUROPEAN OPERATIONS
FORWARD VISION CCTV LTD.
 Tel: +44 (0) 1252 773 700
 Fax: +44 (0) 1252 773 701
 Email: Sales@FVCCTV.com
 Web: www.FVCCTV.com

Specifications: Monochrome Cameras

CCD	S3 High Resolution Monochrome	SX3 Enhanced Infrared Performance
Image Sensor	1/3" Interline SuperHAD	1/3" LXR CCD
Resolution	600 TVL	420 TVL
Effective Pixels	NTSC: 768 (H) x 494 (V) • PAL: 752 (H) x 582 (V)	NTSC: 768 (H) x 494 (V) • PAL: 752 (H) x 582 (V)
Sensitivity	0.05 Lux @ F1.4	0.05 Lux @ F2
S/N Ratio	Greater than 50dB	Greater than 50dB
Output Signal	1Vp-p, 75Ω	
Gamma	0.45	
Gain Control	AGC	
Electronics Iris	1/60 ~ 1/100,000 (NTSC) • 1/50 ~ 1/100,000 (PAL)	
Consumption	5 W maximum	
Voltage	12 to 24 AC/DC	
Construction	Robust aluminum extrusion with four entry plugs	
Bracketry	U-Bracket with stainless steel straps included	
View Window	Copper-free tempered view window	
Weight	10 lbs (4.5kgs) without camera	
Operational Range	-50°C to +50°C -58°F to +122°F	
Overall Dimension	Approximately 3 3/8" (86mm) diameter x 12" (305mm) length	

Specifications: High Performance Infrared Cameras

CCD	SX4 High Performance Infrared
Image Sensor	1/3" LXR CCD for high performance infrared
Resolution	420 TVL
Effective Pixels EIA	EIA: 542 (H) x 492 (V)
Effective Pixels CCIR	CCIR: 542 (H) x 582 (V)
Sensitivity	0.01 Lux @ F1.2 (SAGC on) 0 Lux under IR illumination
S/N Ratio	Greater than 48dB
Output Signal	1Vp-p, 75Ω
Gamma	0.45
Gain Control	AGC
Electronics Iris	1/60 ~ 1/100,000 (EIA) • 1/50 ~ 1/100,000 (CCIR)
Consumption	5 W maximum
Bracketry	U-Bracket with stainless steel straps included
Voltage	12 to 24 AC/DC
Construction	Robust aluminum extrusion with four entry plugs
View Window	Copper-free tempered view window
Weight	10 lbs (4.5kgs) without camera
Operational Range	-50°C to +50°C -58°F to +122°F
Overall Dimension	Approximately 3 3/8" (86mm) diameter x 12" (305mm) length